



WATER AND SANITATION REPUBLIKA SRPSKA



Radmila Mihić
Head of Project Management Unit
Ministry of Finances, Assistante Minister

June 23, 2015.



PROJECT SEGMENT SYNOPSIS

Project Title	Water and Sanitation RS
Identification number	2012/S 238-390729
Promoter – Financial Intermediary	PMU representing the Ministry of Finances and Ministry of Agriculture, Forestry and Waters 23 municipalities subsidiary
Project partners	Donors: European Commission, SIDA
References	25.741 EIB, IPA 2010 Serapis 2008-0556
Amount	100.000.000 EUR



Reservoir Kozarska Dubica



Remote control room



The discharge of air from the tube



Kozarska Dubica

The biggest investment in Wat&San in the
Republika Srpska

1. DIFERSIFED

- Loan form the EIB
50.000.000 EUR
- EU Funds (IPA 2010,2011)
20.000.000 EUR
- Bilateral funds (SIDA)
15.000.000 EUR
- Own funds 15.000.000

2. COMPLICATED

- Int. Agreements
(ratification, subsidiarity)
RS-BH-EIB-EU
- National legislation
Government of RS –
Municipalities
- (EIB Guide to Procurement
, PRAG procedures
- FIDIC
- PF, PAR binding

Wat San RS

3. DEMANDED

- Water systems Household connections
- Sewerage systems Works
- resevoirs, Equipment
- WTP/WWTP Design
- Supervision

6. CHALLENGING

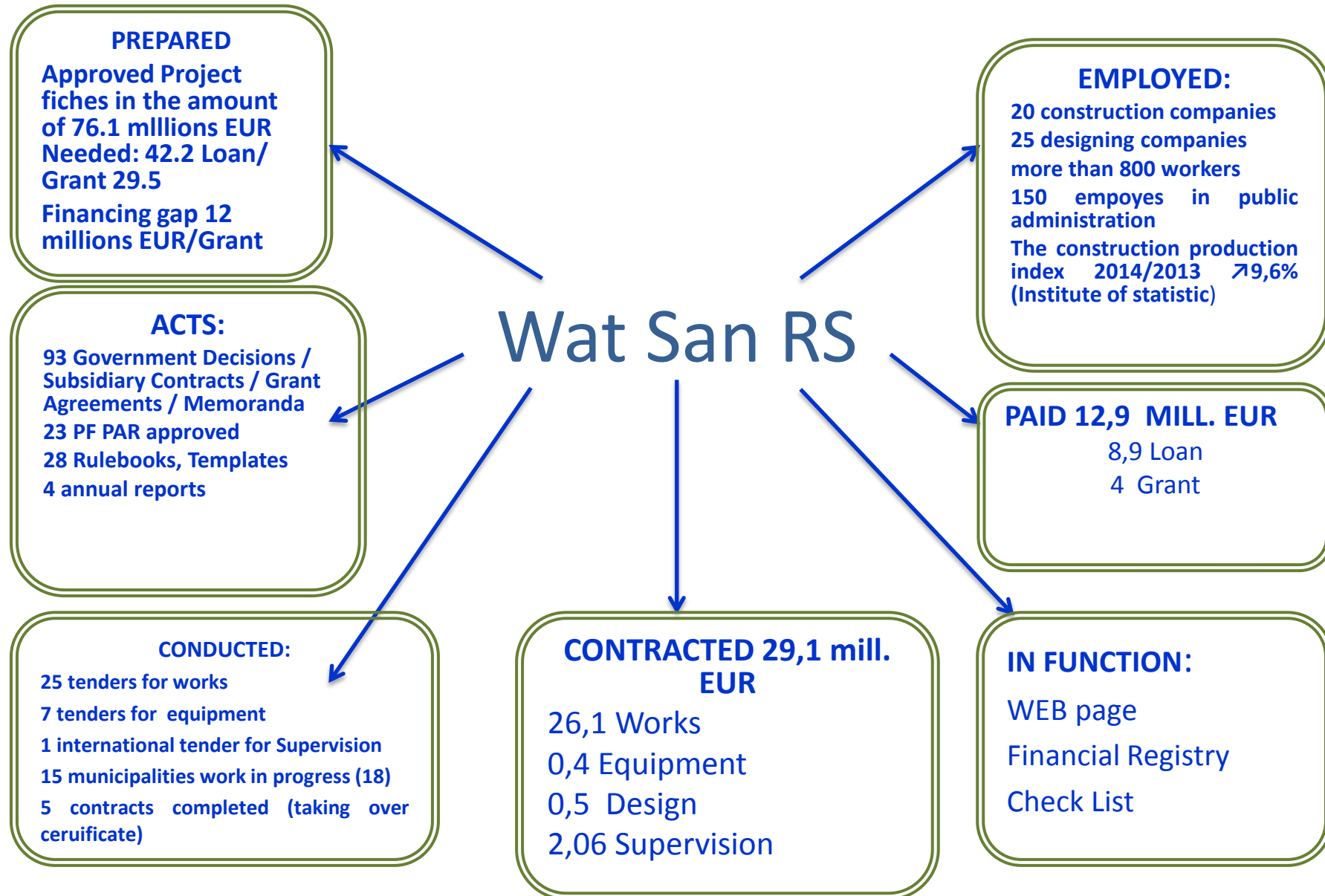
- Sociocratic

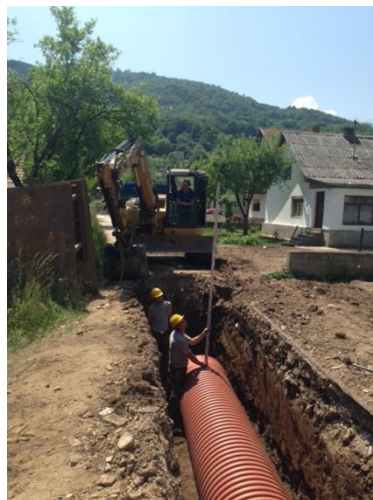
5. MULTI-BENEFICIARY

- 23 Municipality contracted
(decisions)
- 29 municipalities - project
activities
- Implementation in phases
- Minimum 4 contracts per
municipality

4. COMPLEXED

- Government of RS
(MF, MAFW)
- PMU
- PIT
- MFT BH
- Consultants
- Supervision







FINANCING GAP IN TOTAL

Total Cost New Investments	EIB Loan allocation /Available	Own Funds/Available	Grant Funds/Available	Financing Gap/Grant
90,1	50	4,3	17,4	17,4

Total Grant Contribution Needed for Projects ready for tendering

Total Cost New Investments	EIB Loan allocation /Available	Financing Gap/Grant	Novi Grad, Foča, Brod, Nevesinje, Teslić
16,93	11,01	5,92	

Wat San RS

PRESCRIBE
rules /
procedures
(PRINCE 2)

**NEW LEADERSHIP
APPROACH**
introduced in project
management


SEPERATE
preparatory/
procurement/ financial/
operational/supervision/
activities between
implementation groups

HAVE
financial/procurem
ent/engineering
experts on the
board, not
politicians

ESTABLISH
data base or
registry with
key updated
figures

HOLD
regular meetings with
key stakeholders Inspect
construction progress
every day
"Circle"

PAY ATTENTION
to the correction
of the Design
documentation



'An ounce of action is worth a ton of theory.'
Friedrich Engels - German Philosopher

THANK YOU FOR ATTENTION!

www.watsanrs.org

r.mihic@mf.vladars.net